

Standard Dynamometer (Line Rider) Available for hoist line sizes of 1/2inch to 1-5/8inch. Dynos come in three sizes 4 inch, 6 inch and 8 inch sheave. See Parts list below for detail.

Sheave	Size	Size mm	Pin	Dyno	Sheave Assembly	End Sheave	Loading Sheave	Load pin	Plate pin Side	Plate cam Side	Plate Kit
4"	1/2"	12.7	1K	33Y1300	22KYS4134			33C2001	22KYP4010	22KYP4011	22KYP9400
4"	9/16"	14.3	2K	33Y1400	22KYS4144			33C2002	22KYP4010	22KYP4011	22KYP9400
4"	5/8"	15.9	2K	33Y1600	22KYS4164			33C2002	22KYP4010	22KYP4011	22KYP9400
4"	3/4"	19.1	2K	33Y1900	22KYS4194			33C2002	22KYP4010	22KYP4011	22KYP9400
4"	13/16"	20.6	2K	33Y2000	22KYS4204			33C2002	22KYP4010	22KYP4011	22KYP9400
4"	7/8"	22.2	3K	33Y2200	22KYS4204			33C2003	22KYP4010	22KYP4011	22KYP9400
6"	13/16"	20.6	2K	33Y2100		22KYS6203	22KYS6204	33C2002	22KYP6010	22KYP6011	22KYP9600
6"	7/8"	22.2	3K	33Y2300		22KYS6223	22KYS6224	33C2003	22KYP6010	22KYP6011	22KYP9600
6"	1"	25.4	3K	33Y2600		22KYS6263	22KYS6264	33C2003	22KYP6010	22KYP6011	22KYP9600
6"	1 1/8"	28.6	3K	33Y2800		22KYS6283	22KYS6284	33C2003	22KYP6010	22KYP6011	22KYP9600
6"	1 1/4"	31.8	3K	33Y3200		22KYS6323	22KYS6324	33C2003	22KYP6010	22KYP6011	22KYP9600
8"	1 1/8"	28.6	4K	33Y2900		22KYS8283	22KYS8284	33C2004	22KYP8010	22KYP8011	22KYP9800
8"	1 1/4"	31.8	6K	33Y3300		22KYS8323	22KYS8324	33C2006	22KYP8010	22KYP8011	22KYP9800
8"	1 3/8"	34.9	6K	33Y3500		22KYS8353	22KYS8354	33C2006	22KYP8010	22KYP8011	22KYP9800
8"	1 1/2"	38.1	6K	33Y3800		22KYS8383	22KYS8384	33C2006	22KYP8010	22KYP8011	22KYP9800



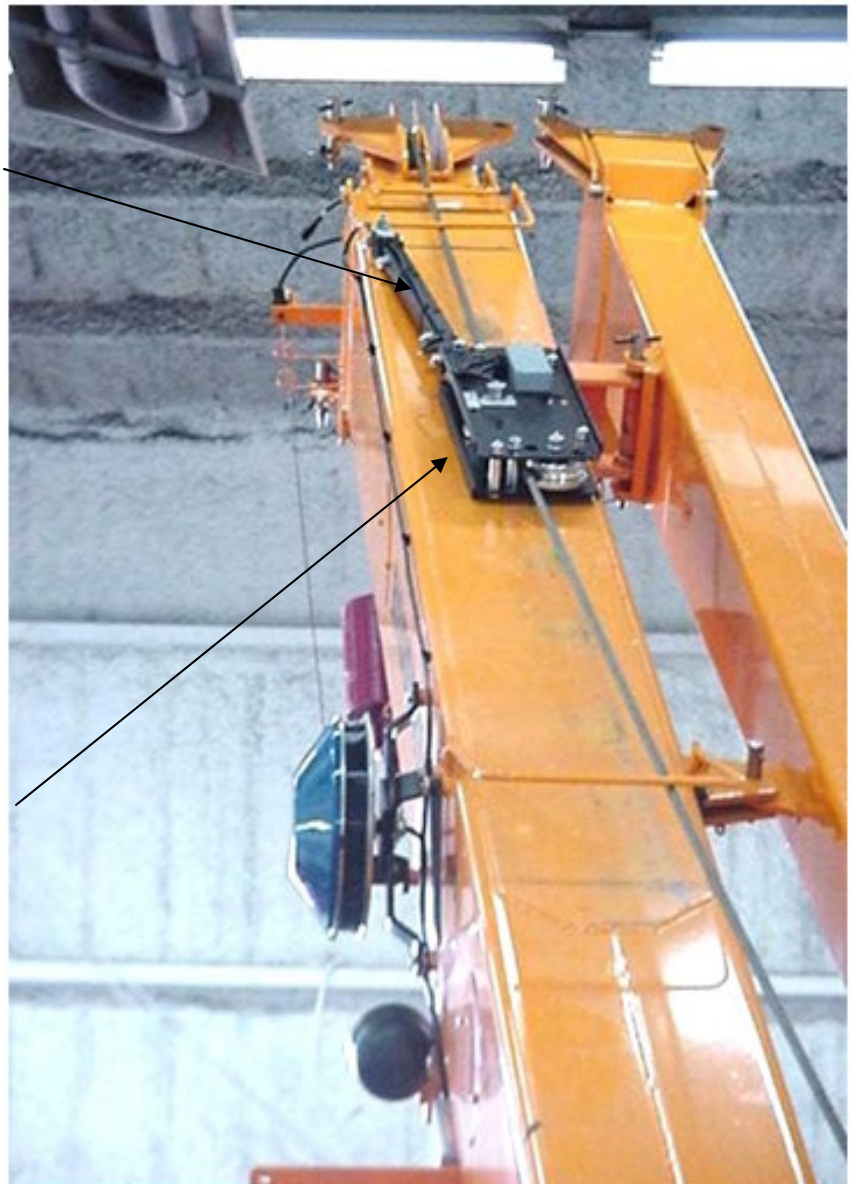
Dynamometer fix mounted on a telescopic hydraulic boom. Preferred mounting method for hydraulic cranes with boom mounted winch.

Swing Arm—Available in two sizes:

22KYK0400 Swing arm standard for 4" and 6" sheave dynamometers

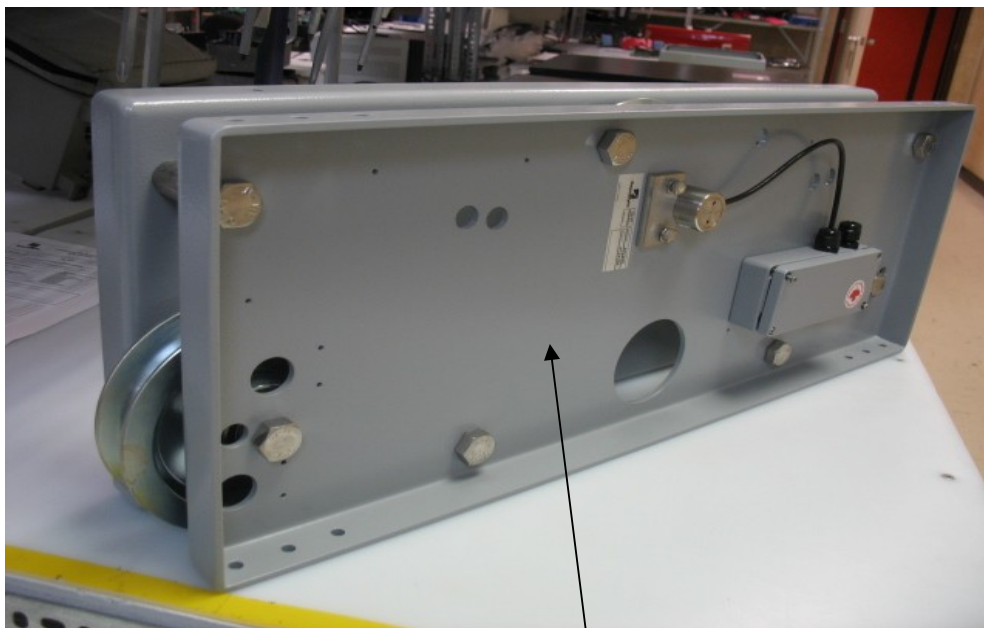
22KYK0800 Swing arm large for 8" sheave dynamometers.

Dynamometer mounted with swing arm on telescopic hydraulic boom. Preferred method for hydraulic cranes with booms moving independent of the winch.





Dynamometers mounted side by side, vertical and horizontal on a lattice crane boom. Preferred method for lattice cranes with side by side winches.



The offshore dynamometer uses stainless steel bolts and sheaves with powder coated side plates. It is designed for a salt water environment and is suitable for offshore applications. The offshore dynamometers use the same parts numbering system as the standard dynos with the exception of ending in the number "40". For example the standard dyno 4" sheave 5/8" line size is a part # 33Y1600. The same size in the offshore version is 33Y1640.