

# Wylie W3100

Crane Warning  
Systems Atlanta

1-877-672-2951 Free  
1-770-888-8083 Direct  
1-678-261-1438 Fax  
www.cwsa.biz



## Specifications:

Display rated IP65

Fully sealed against weather and corrosion.

Display Dimensions:  
8.7"x4.4"x2.4"

Display format: two 16 characters x 2 lines

Operating Temperature -10 to 140 F

Power Supply Range 10V to 30V DC

Audible Alarm: 80Db

Memory Capacity: Up to 1000 duties

Analog Inputs: 3 loads, 1 angle, 1 length, 4 extra.

## Kit for Telescopic boom crane includes:

W3100 display with chart programming,

(2) pressure transducers,

cable reel with length and angle sensor

(1) ATB switch and weight

Connecting cables

System manual

\*Optional equipment:

2nd ATB switch and weight, slew sensor for range limiting and proximity sensors for quadrant charts. Dynamometer and/or load link if used on lattice crane. \*

## W3100 Load Moment Indicator (LMI / RCI)



The W3100 LMI / RCI provides the operator with continuous display of the load, capacity, radius, and angle. The display has a bar graph representing the percentage of safe working load. The system warns of approach of overload and anti-two-block. The internal relay is triggered for overload and ATB for use with a lock out system. The system also has optional software and sensors for data logging that records all the crane lift information as well as range limiting features. The W3100 has enough processing power and onboard memory to handle all lattice and

## Why choose a Wylie W3100 System?

A proven product history no one can match.

Wylie's been building crane indicators since 1933!

Wylie pioneered the first crane overload system in the world!

Has intelligent self diagnostics than warn the operator of any sensor failure.

The display and processor are all in one compact box.

Reliable and easy to operate.

Powerful processor with enough onboard memory to allow for large load charts and extra options such as data logging and range limiting!

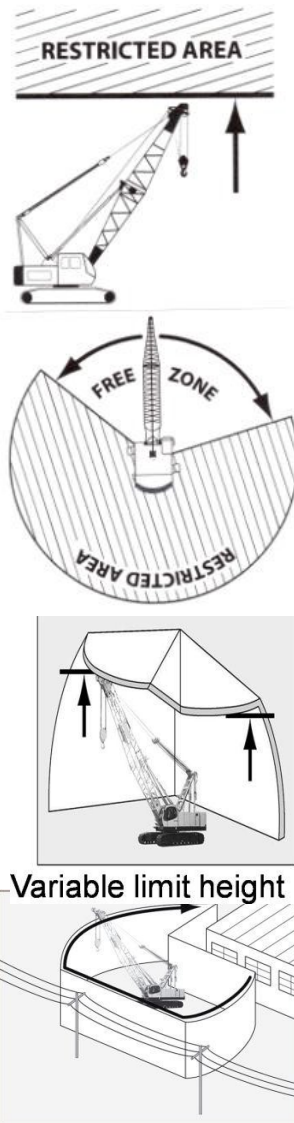
Crane Indicators are our Business!

# Wylie W3100

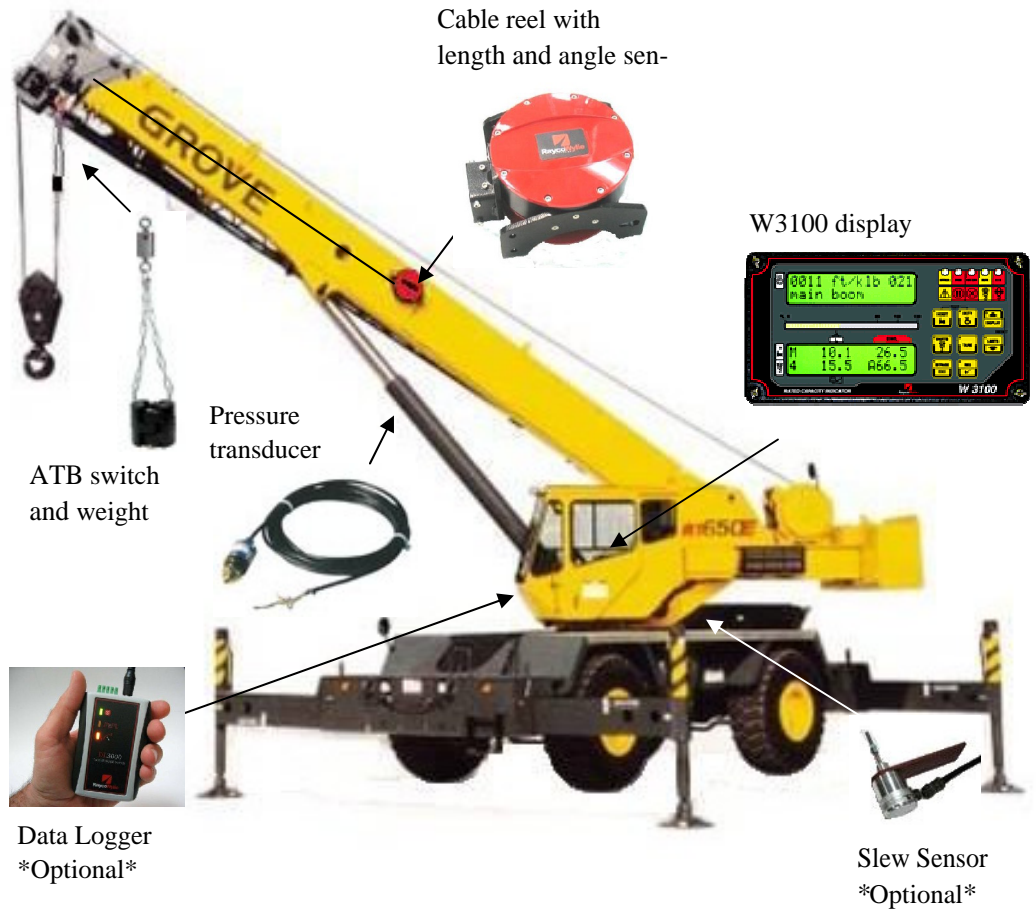
Crane Warning  
Systems Atlanta  
1-877-672-2951 Free  
1-770-888-8083 Direct  
1-678-261-1438 Fax  
www.cwsa.biz



Range Limiting option allows for these configurations:



## W3100 LMI Installation with Pressure Transducers



The W3100 pressure transducer system is a true Load Moment Indicator (LMI) because it actually measures the load on the boom from the pressure sensors mounted on the lift cylinder. This type of system is accurate, reliable, low maintenance, and easy to use. The W3100 has a powerful processor and large onboard memory that allows for large load charts and extra options such as data logging and range limiting.

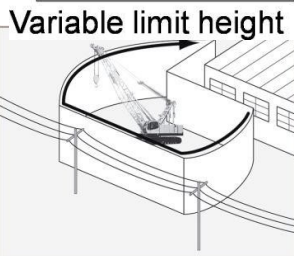
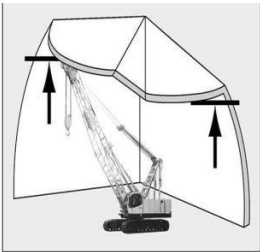
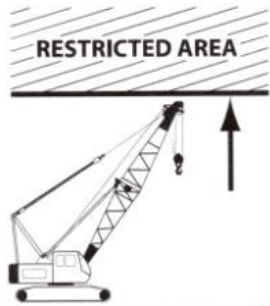
Crane Indicators are our Business!

# Wylie W3100

Crane Warning  
Systems Atlanta  
1-877-672-2951 Free  
1-770-888-8083 Direct  
1-678-261-1438 Fax  
www.cwsa.biz



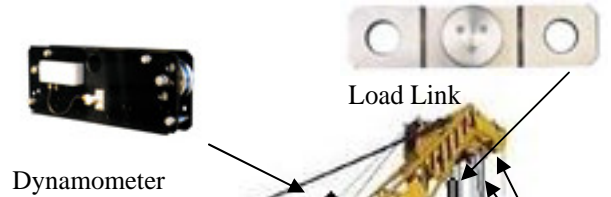
Range Limiting option allows for these style configurations:



Variable limit radius

## W3100 RCI Installation with Dyno and Load Link

Data Logger  
\*Optional\*



Dynamometer

Load Link



ATB  
Switch and  
Weight

Angle Sensor



W3100 Display

Slew Sensor

The W3100 used on lattice cranes can use a combination of one load link and a line rider (dynamometer) or two line riders. The W3100 has a powerful processor and large onboard memory that allows for large load charts and extra options such as data logging and range limiting.