

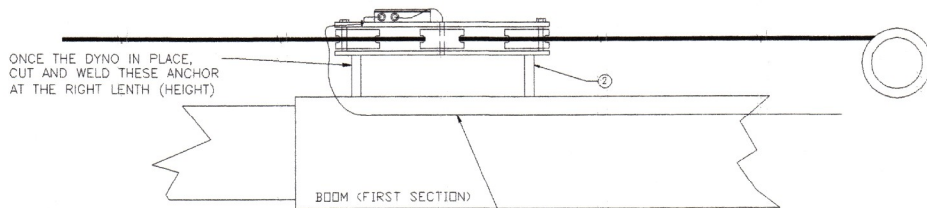
Crane Indicators are our Business!

# Wylie W2190

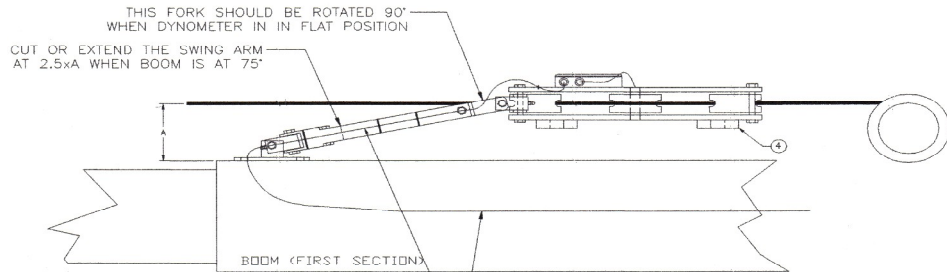
Crane Warning  
Systems Atlanta  
1-877-672-2951 Free  
1-770-888-8083 Direct  
1-678-261-1438 Fax  
www.cwsa.biz



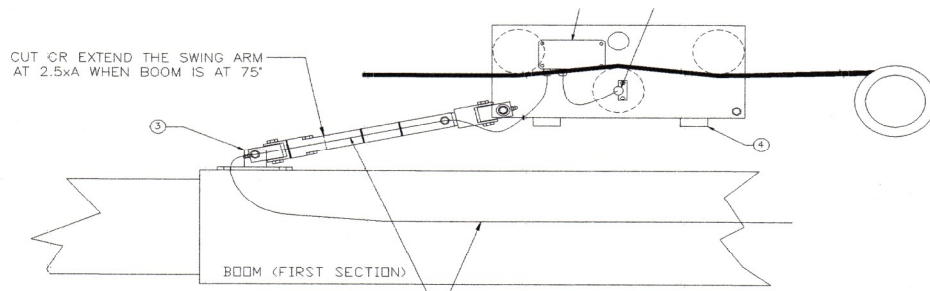
## W2190 Line Rider (Dynamometer)—Load Link Installations



Fix mount on telescopic boom. This is the preferred method of installation on telescopic boom cranes where the winch is mounted on the boom.

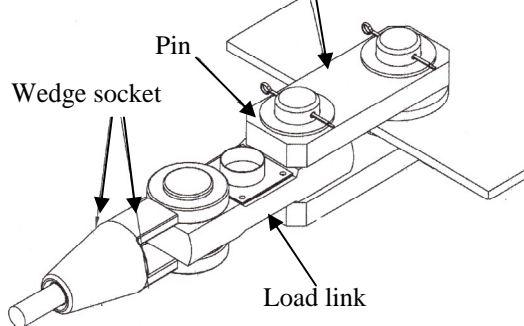


Horizontal mount with swing arm. This is the preferred method of installation on telescopic boom cranes where the winch is not mounted on the boom of the crane. This allows for the dyno to move up and down with the hoist line as the boom angle changes.



Vertical mount with swing arm. This is the preferred method of installation on lattice boom cranes. This allows for the dyno to move up and down with the hoist line and also for clearance where two dynos are mounted side by side.

Adaptor plates for mounting the load link



Load links are sometimes used on lattice cranes where the hoist is rigged for even parts of line and the dead-end of the line is secured to the boom. Often this is on the main hoist and a dyno is used for the auxiliary or whip line.